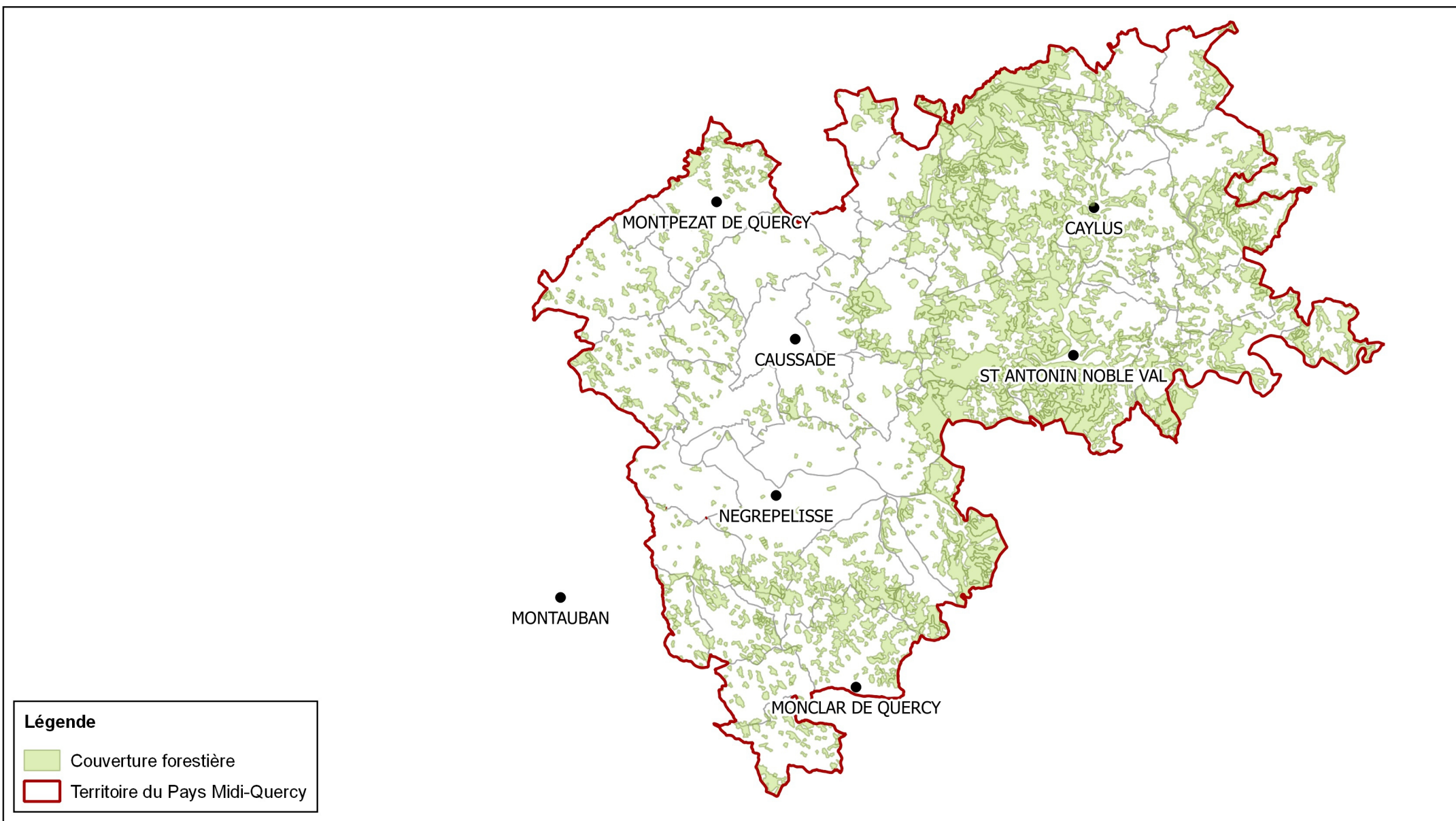
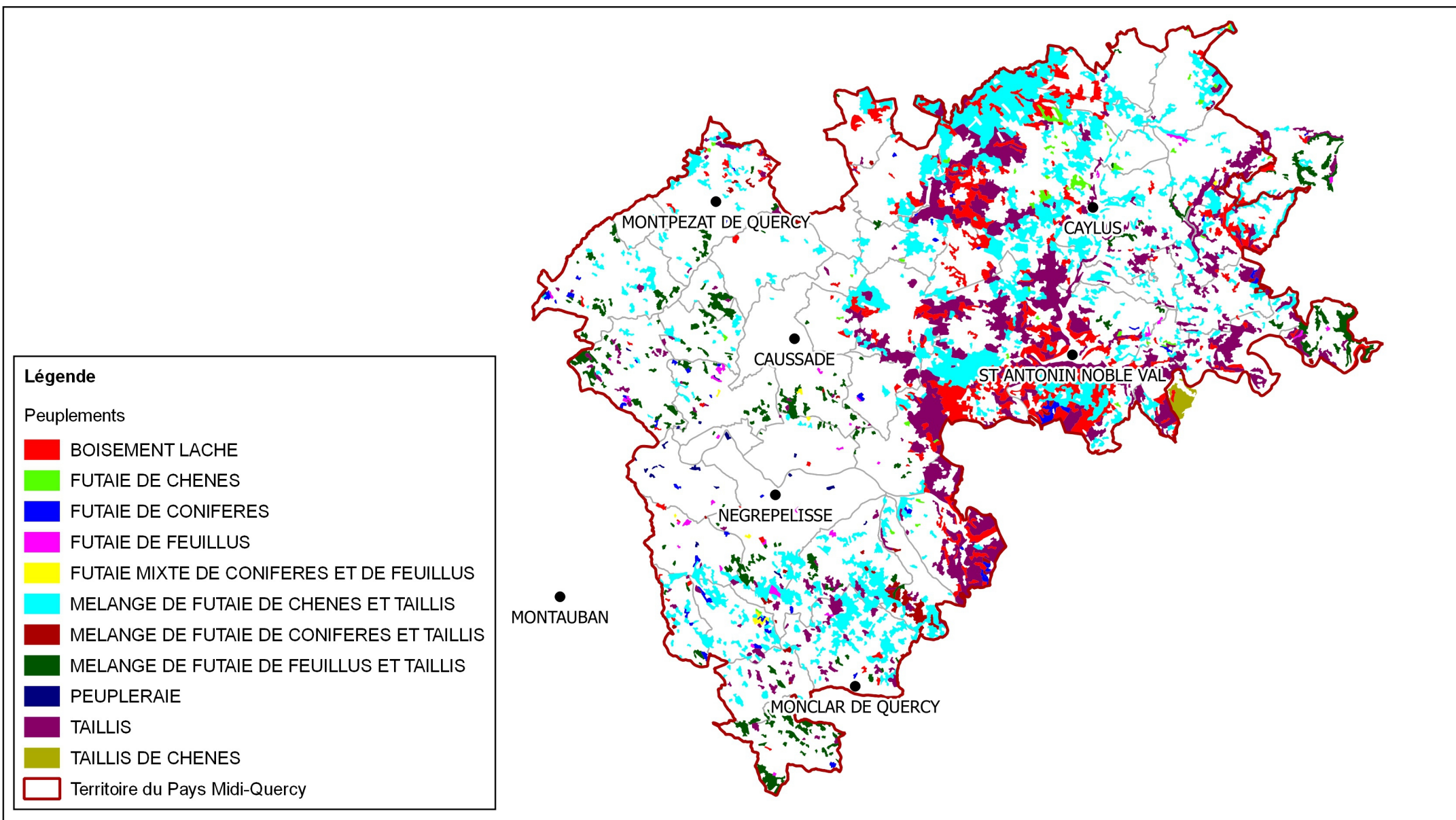


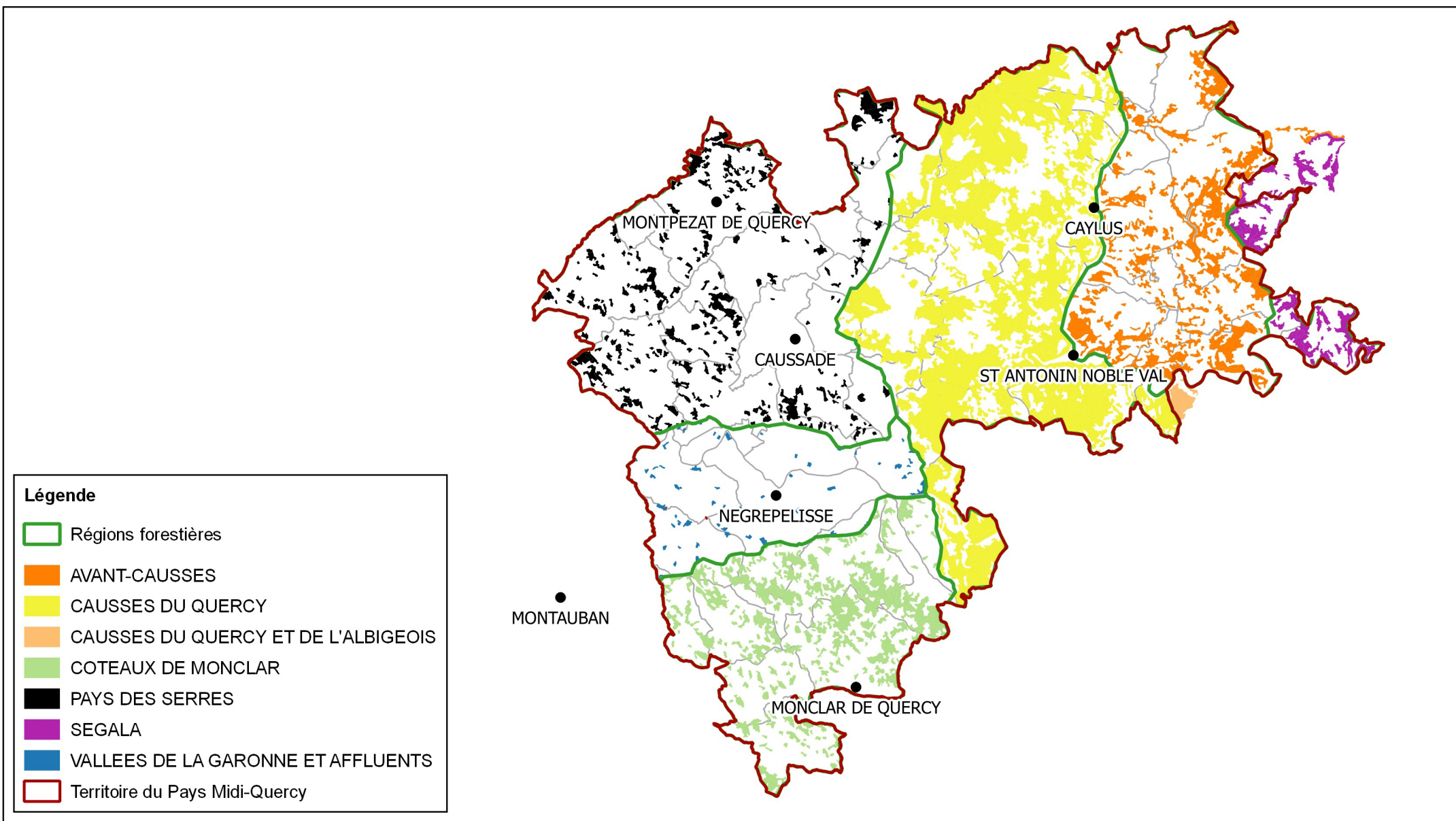
Couverture forestière en Pays Midi-Quercy












Structure des peuplements en Pays Midi-Quercy



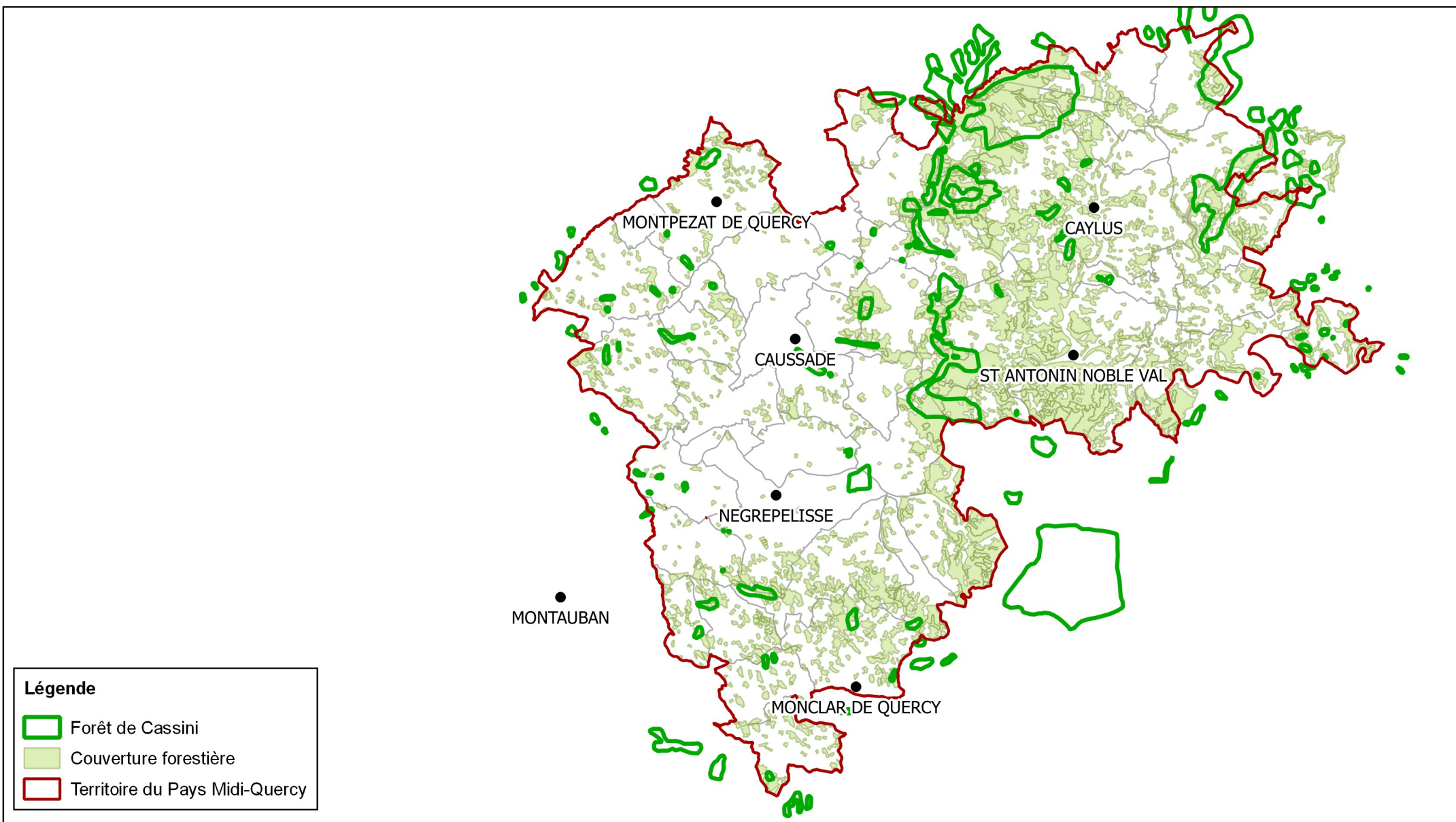
Régions forestières du Pays Midi-Quercy



Légende

-  Régions forestières
-  AVANT-CAUSSES
-  CAUSSES DU QUERCY
-  CAUSSES DU QUERCY ET DE L'ALBIGEOIS
-  COTEAUX DE MONCLAR
-  PAYS DES SERRES
-  SEGALA
-  VALLEES DE LA GARONNE ET AFFLUENTS
-  Territoire du Pays Midi-Quercy

Boisements forestiers anciens (cartes de Cassini) et couverture forestière actuelle en Pays Midi-Quercy

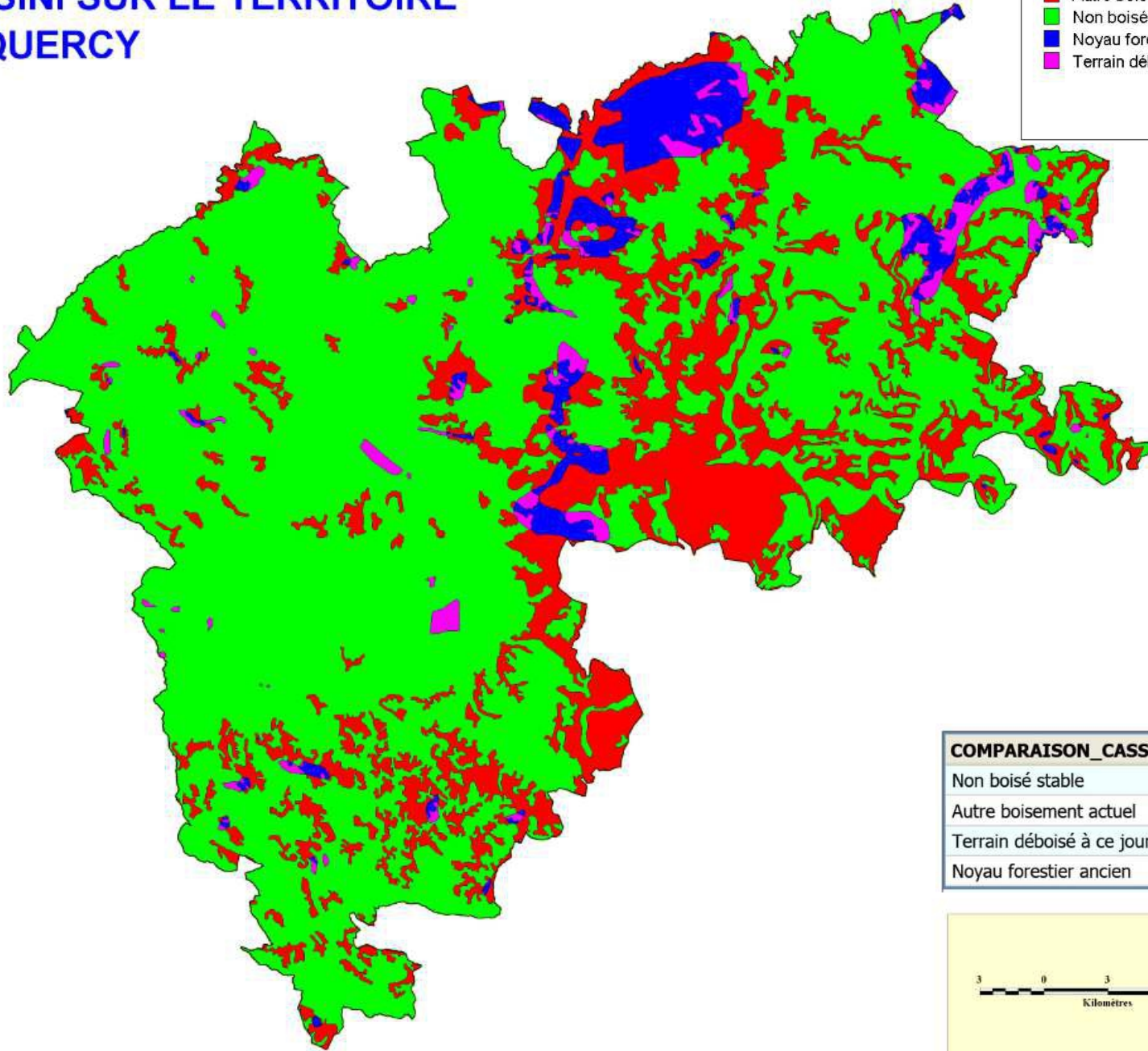


Comparaison entre les boisements forestiers anciens (cartes forêt de Cassini), la couverture forestière actuelle et les terrains déboisés en Pays Midi-Quercy

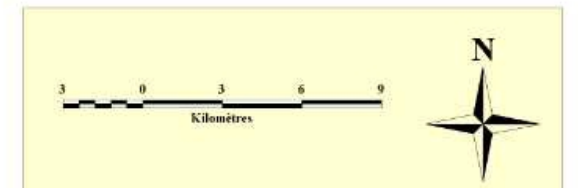
CARTE DE CASSINI SUR LE TERRITOIRE DU PAYS MIDI QUERCY

COMPARAISON_CASSINI_CLC :

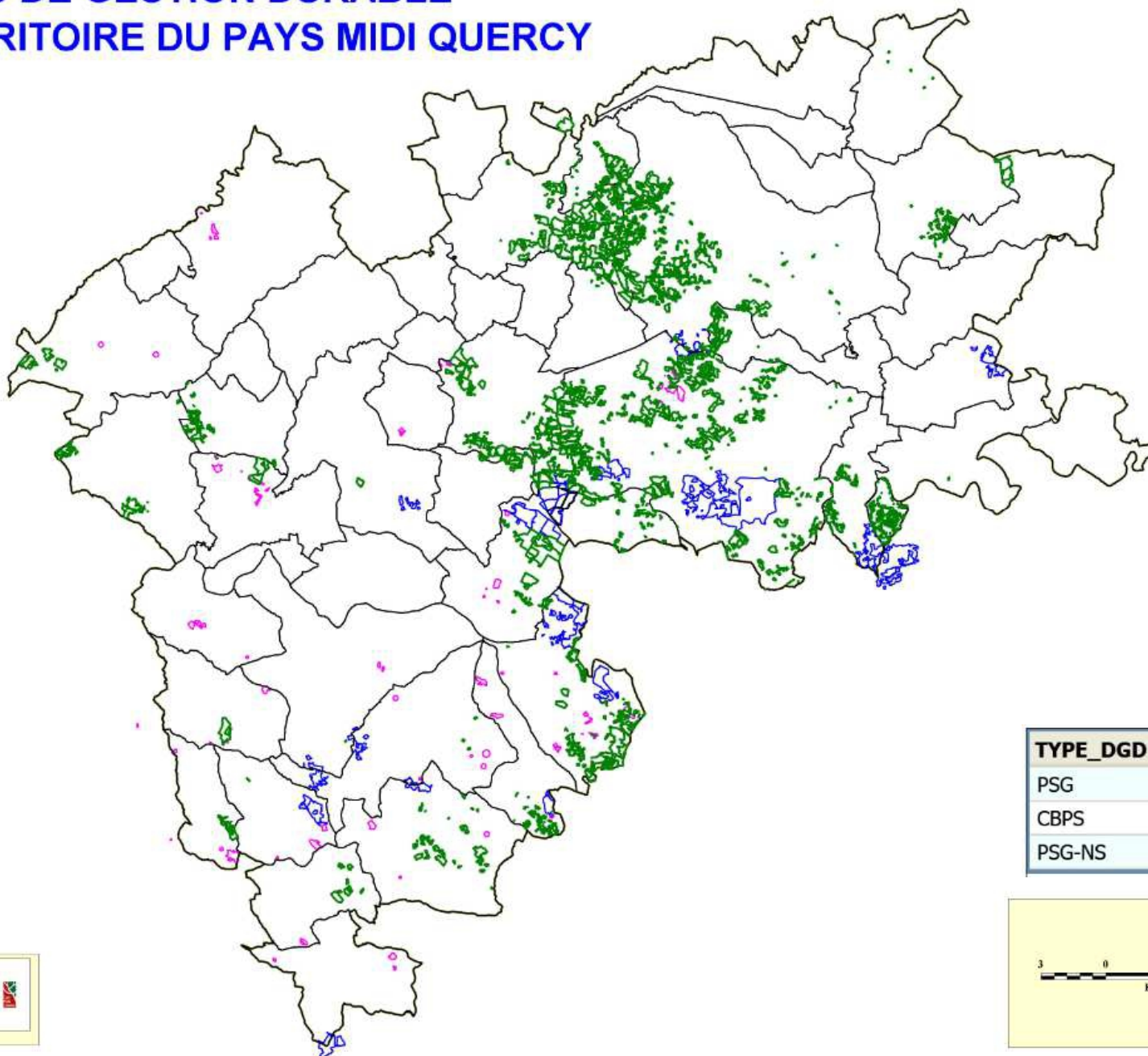
- Autre boisement actuel
- Non boisé stable
- Noyau forestier ancien
- Terrain déboisé à ce jour (2006)







COMPARAISON_CASSINI_CLC	surface_ha
Non boisé stable	84 331.67
Autre boisement actuel	27 309.23
Terrain déboisé à ce jour (2006)	2 817.01
Noyau forestier ancien	5 103.16



DOCUMENTS DE GESTION DURABLE SUR LE TERRITOIRE DU PAYS MIDI QUERCY



LEGENDE:

	PSG-NS
	PSG
	CBPS
	Contour PMQ

TYPE_DGD	Surface_ha	Nombre
PSG	1 740.77	21
CBPS	260.14	41
PSG-NS	4 221.00	97

